

MSD4

4-wire /
2-wire G.SHDSL Router

Mitron
Devices Connecting Australia



The MSD4 SHDSL router is highly suited to the specific needs of multiple users in small/home offices or remote/branch offices. The MSD4 supports high-speed symmetric data transmission, and adaptive multiple data rates. Under 4-wire operation, the MSD4 data rates can be up to 4.6 Mbps; and under 2-wire operation the MSD4 can be up to 2.3 Mbps, over an ordinary telephone line.

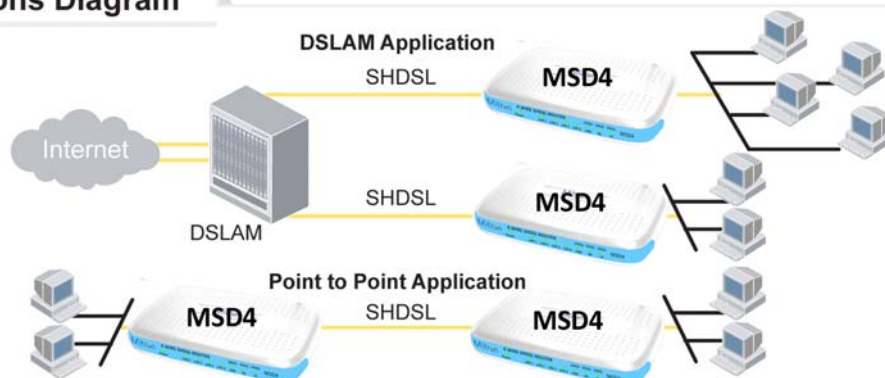
The MSD4 supports up to 16 concurrent virtual connections to multiple destinations. With an integrated 4-port 10/100 BaseT Ethernet switch the MSD4 enables up to four computers or devices to be directly connected, saving the cost and space of an external hub.

With routing and bridging functions, the MSD4 provides a flexible and economic solution for multiple users in small offices and branch offices, to access the Internet and establish an Intranet through a single IP address. The routers can also be configured in either server or client mode providing LAN-to-LAN connectivity between two sites.

Features

- Compliance with ITU-T G.991.2 (G.SHDSL) and G.994.1 (G.hs)
- 4-wire/2-wire operation with auto-detection or manual setting
- Auto-negotiating rate adaptation or Fixed Rate mode
- 4-port 10/100 Base-T Ethernet switch with MDI/MDIX
- Operates as a Bridge & Router
- Supports DHCP server, DHCP relay, and DNS proxy
- Virtual server with single port mapping
- Built-in SNMP for remote control
- Supports remote upgrades
- Supports DHCP client
- VPN Pass Through
- Virtual server with IP protocol mapping and Port range mapping

Applications Diagram



MSD4

4-wire / 2-wire G.SHDSL Router

Mitron
Devices Connecting Australia

Specifications

WAN Interfaces	
SHDSL standard	ITU-T G991.2 / G994.1
SHDSL Line Interface	RJ-45
Encoding scheme	TC-PAM
Line Rate	Per ITU-T G991.2 (SHDSL)
Data Rate	N x 2 x 64 Kbps (4 wire) or N x 64 Kbps (2 wire), N=3~36
Encapsulation	
Multi-protocol over AAL5 Bridged	RFC 2684 (1483)
Multi-protocol over AAL5 Routed	RFC 2684 (1483)
PPP over Ethernet	RFC 2516
PPP over AAL5	RFC 2364
ATM Attributes	
VCs	16
AAL Type	AAL5
ATM Service Class	UBR/VBR/CBR
ATM UNI support	UNI3.1/4.0
OAM	F4/F5
Management	
Console Port	RS232/DB9
SNMP	Yes
Telnet	Yes
Web-based management	Yes
LED Indicators	Power, LAN, SHDSL Status
Local Interfaces	
Standard	
IEEE 802.3 10/100 Base-T/Tx 4 ports	Auto-negotiation
Transparent bridge and learning	Yes
Routing functions	
NAT/PAT	Yes
IP static route	Yes
RIP and RIPv2	Yes
IGMP Proxy	Yes
VLAN	Yes
Security functions	
Mac Filtering	Yes
Packet Filtering	Yes
VPN Pass Through	Yes
Network functions	
ARP	Yes
DNS, NAT/PAT, DHCP/BOOTP	Yes
PAP, CHAP	Yes
Power Supply	
External power adapter	240 VAC 18VAC 900MA
Frequency	50/60 Hz
Environmental Conditions	
Operating temperature	0~50 degrees Celsius
Relative humidity	5~90% (non-condensing)
Dimensions	
205mm(W) x 47mm(H) x 145 mm(D)	

Note: Specifications are subject to change without notice.